

# Shared service imaging

## LOGIQ *i* compact ultrasound system

With demands on radiology departments increasing, the versatile LOGIQ® *i* is your solution to help meet the everyday challenges in both general radiology and echocardiography. LOGIQ *i* has all the capabilities to perform ICAVL and ICEAL accredited shared service cardiology imaging. With the 2 MHz Pedoff probe for suprasternal notch imaging, continuous wave Doppler, ECG and more – you now have the necessary tools to become an accredited shared service imaging department.

Make the most of your LOGIQ *i* for shared service imaging:

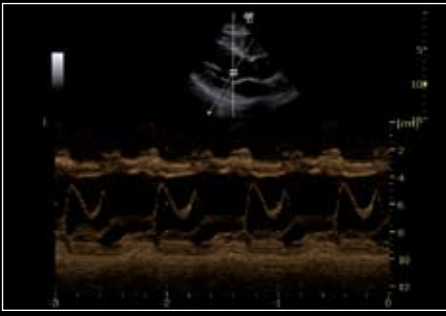
### Image quality enhancements

- SRI-HD (High Definition Speckle Reduction Imaging) with organ specific imaging and sharp color performance ECG heightens your visibility through improved high-definition contrast resolution.
- Automatic Optimization (AO) helps you attain peak image quality at the touch of a button, improving image quality in both B-mode and spectral Doppler.
- Assortment of transducers specifically designed for shared service imaging – Pediatric phased array, adult phased array and continuous wave Doppler – all are ergonomically designed and lightweight to achieve quality exams.

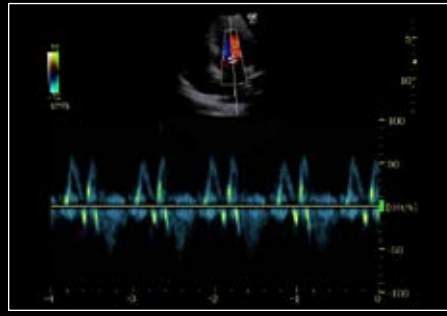
### Workflow enhancements

- Wireless capability provides the convenience of remote data transmissions and helps improve workflow for your physicians.
- Quicksave allows you to quickly move raw DICOM data and images to a USB drive, your PACS or GE Healthcare's Viewpoint Radiology ultrasound IT system.
- Quick keys help make the system easy to customize with user-defined protocols.
- Portable docking station allows you to connect multiple probes at one time, allows for easy integration of peripherals and provides features that help enhance productivity and streamline workflow..

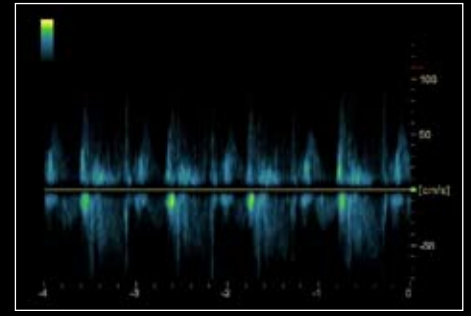




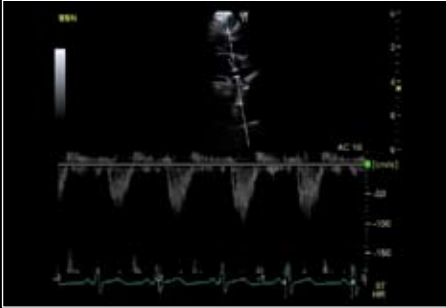
Parasternal long axis view of the mitral valve using the 3S transducer, Anatomical M-Mode, SRI-HD and coded harmonic imaging showing a normal M-Mode of the left ventricle at the mitral valve tips.



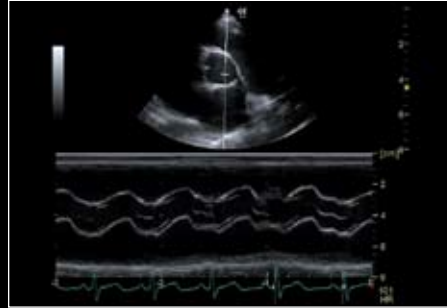
Pulsed Wave Doppler image of the mitral valve in a four chamber view using the 3S transducer demonstrating normal mitral valve Doppler waveform.



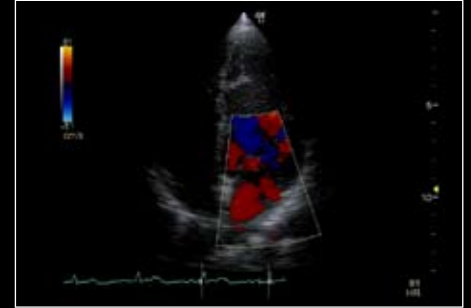
Parasternal long axis M-Mode of the mitral valve with the 3S transducer showing a normal mitral valve tip pattern opening and closing.



Suprasternal notch of a normal nine year old using the 6S transducer with pulsed wave Doppler, coded harmonic imaging, and SRI.



Parasternal short axis aortic valve and M-Mode of the aortic valve and the left atrium with the normal box and kite string configuration using the 6S transducer and standard M-Mode, coded harmonic imaging and SRI.



Apical four chamber view of a normal 9 year old using the 6S transducer with Harmonics, SRI and color flow Doppler showing normal flow in the left atrium and a moderator band in the left ventricular apex.

The powerful and flexible LOGIQ i ultrasound system helps you meet your shared service imaging needs:

- Excellent image quality and image enhancement tools
- Shared service imaging specialty transducers
- Advanced console quality performance in a compact scanner
- Innovative features for ease of use and enhanced workflow

For more information, contact your GE Sales Representative or visit us online at [gehealthcare.com/ultrasound](http://gehealthcare.com/ultrasound).

GE Healthcare  
9900 Innovation Drive  
Wauwatosa, WI 53226  
U.S.A.

[www.gehealthcare.com](http://www.gehealthcare.com)

#### Europe

GE Healthcare  
Beethovenstr. 239  
D - 42655 Solingen  
T 49 212 2802 0  
F 49 212 2802 28

#### Asia

GE Healthcare Clinical  
Systems ASIA  
1105-1108 Maxdo Center  
8 XingYi Road, Shanghai  
200336  
T 86 21 5257 4640  
F 86 21 5208 0582

©2008 General Electric Company — All rights reserved.

GE Medical Systems Ultrasound & Primary Care Diagnostics, LLC, a General Electric company, doing business as GE Healthcare.

General Electric Company reserves the right to make changes in specifications and features shown herein, or discontinue the product described at any time without notice or obligation. Contact your GE Representative for the most current information.

GE, GE Monogram and LOGIQ are trademarks of the General Electric Company.

ULT-0464-11.08-EN-US



imagination at work